



Term 1
Year 1

Teacher: Miss Bathgate
LSAs: Miss Southey
and Miss Palmer

IMPORTANT DATES

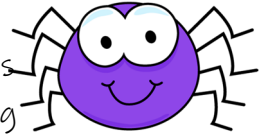
- 16.09.20-Meet the teacher PowerPoint uploaded onto the website.
- 21.09.20—03.10.20- Harvest Donations
- 01.10.20- Diversity Month
- 05.10.20-Individual Photographs (TBC)
- 23.10.20—Half Term

HOME LEARNING

In line with our new home learning policy, all learning will continue to be based on the following activities: Daily reading for 15 minutes and weekly spellings. Home learning will be sent home every Friday and expected to be returned by the following Friday. All children are expected to complete the home learning.

First I can of the term: I can show that I am listening.

Welcome to Year 1! It has been a pleasure getting to know your children this week. They have impressed myself, Miss Southey and Miss Palmer by settling in really well. If you have any concerns, I encourage families to contact the office via email.



As **Athletes** we will have **PE** every Tuesday afternoon and Thursday morning so please **remember** your kits! Mrs Roberts will teach Year 1 every Tuesday afternoon whilst I have planning time. Many thanks for all of your support! Miss Bathgate



As **Mathematicians** we will begin by recognizing numbers to 10 and revise counting up to 20. We will then revise finding one more and one less than a number before moving onto addition and number bonds.

As **Authors and writers** we will begin by recapping our learning in Reception. We will revise phase 2 sounds before moving onto consolidating Phase 3 digraphs and trigraphs This will support the children to read and write phonetically using these sounds.

Please remember to keep reading for 15 minutes every day!



Who Am I?

As **Scientists** we will explore what makes us who we are. We will be learning the rules of our new classroom, naming and labelling parts of our body and designing our own self portraits.



What do Artists do?

As **Artists**, we will explore what makes a 'dot' and develop our mark making skills. We will make our own individualized 'dot' card.

What is my hat made of?

As **Engineers and Artists** we will identify hats and their materials.

We will then design and create our own hat.



Geographers • Mathematicians • Artists • Athletes • Authors (writer) • Scientists • Authors (Reader) • Philosophers • Linguists • Engineers • Historians • Musicians

Tiles for use on newsletter

